



**Inductor® ALFe® 3.5 – Shown with optional cart**



**Read these use and safety instructions before using the  
Inductor® ALFe® 3.5**

:

## General contents

<b>1. Safety instructions</b> .....	<b>Page 4</b>
<b>2. Product identification</b> .....	<b>Page 8</b>
<b>3. Product specifications</b> .....	<b>Page 8</b>
<b>4. Product weight and dimensions</b> .....	<b>Page 8</b>
<b>5. Unit description</b> .....	<b>Page 9</b>
<b>6. Instructions for use</b> .....	<b>Page 10</b>
<b>7. Alarm lights</b> .....	<b>Page 10</b>
<b>8. Application of the warranty</b> .....	<b>Page 11</b>
8.1. Return of products to Induction Innovations, Inc.....	Page 11
8.2. Recommendations regarding product transport.....	Page 11
8.3. Recommendations for packaging and transport.....	Page 11
8.4. Warranty duration and limits.....	Page 12
<b>9. Replacing the inductor</b> .....	<b>Page 12</b>
<b>10. Maintenance</b> .....	<b>Page 13</b>
10.1. General recommendations.....	Page 13
10.2. Preventive maintenance.....	Page 13
10.3. Routine maintenance.....	Page 13
10.3.1. Replacing the flow concentrator.....	Page 14
10.4. Special maintenance.....	Page 15
10.4.1. Replacing the antifreeze fluid.....	Page 15
<b>11. Machine logbook</b> .....	<b>Page 16</b>

Dear Customer, thank you for choosing us. We are grateful for your purchase of the Inductor® ALFe™ 3.5 induction system, a versatile tool that will be of great help to your business for many years. Our service is at your disposal for any problems related to use or maintenance.

## 1. SAFETY INSTRUCTIONS



This manual describes the operation of the unit and the precautions to be taken for your safety. Read it carefully before use and keep it in a safe place for future reference. These instructions must be read and understood before use.

Do not undertake any modifications or maintenance other than those specified in the manual. The manufacturer shall not be held liable for physical or material damage due to improper use of the equipment.

In case of problem or doubt, please consult a qualified person to use the unit correctly. The safety instructions must be observed.

The manufacturer declines all liability in the event of improper or hazardous use. Any use not mentioned in this manual is strictly forbidden and potentially dangerous. The product is semi-automatic and requires the presence of an operator.

---

Do not use the unit if the power cord or plug is damaged.

---



### **Caution! Very hot surface. Risk of burns.**

- Overheated objects and equipment can cause burns.
  - Do not touch hot objects with bare hands.
  - Wait for the objects and equipment to cool down before using them.
- 



- Check that jewelry (rings in particular) and/or metal objects are not in close proximity to the induction system and the inductor when the latter is in operation.
- Remove any jewelry and/or metal object before using this unit.
- Persons with metal prostheses must not use this unit.
- In case of burns, rinse with plenty of water and seek medical advice immediately.

- Machine use should only be entrusted to adult, suitably trained personnel in full compliance with current regulations and the instructions contained in the manual.
  - Keep the machine in a suitable place, protected from weathering.
  - Do not leave equipment unattended in the presence of children.
  - If equipment will no longer be used, render it inoperative by performing all disposal practices in accordance with regulations.
- 

### **Danger from gases and vapors.**

- Keep away from fumes and do not breathe vapors.
  - When working indoors, ventilate the room and/or use an air extractor to evacuate vapors and gases.
  - Induction heating of certain materials, adhesives and fluids can produce vapors and gases. Breathing these gases and vapors may be dangerous to your health.
  - If ventilation is insufficient, use a certified respirator.
  - Read the product technical and safety data sheets (MSDS) and the manufacturer's instructions for adhesives, metals, coatings, detergents, and pickling agents.
  - Do not use the heater on degreasing or spraying parts. Heat can react with vapors to form highly toxic and irritating gases.
  - Only work in a confined space if it is well ventilated or using a certified vacuum cleaner. Vapors and gases resulting from heating can replace the oxygen in the air and cause sickness or death. Verify the quality of the air you breathe.
  - Do not overheat metals, such as galvanized steel, lead-coated steel, or cadmium-coated steel, unless the coating is removed from the surface to be heated, air is well ventilated, and, if necessary, wear a certified respirator. Castings and all metals containing these elements can release toxic vapors when heated.
  - Refer to the MSDS for temperature information.
-



**Caution! Electrical hazard.**

---



**Caution! Strong magnetic field. Persons having active or passive implants must be informed.**



Do not approach the inductor at the head and vital parts level during operation.

---



Persons with pacemakers or biomechanical equipment should not approach the device. Risk of disturbances/interference in the operation of pacemakers/ biomechanical equipment in the vicinity of the device. Consult a physician before approaching the induction heating system.



Wear safety glasses with side shields or use a face shield.



Wear gloves.

This machine should only be used for the purpose for which it was expressly designed, that is: to generate heat inside ferrous materials.



Any other use not expressly covered in this manual is strictly prohibited as considered improper and therefore dangerous. The machine is semi-automatic and therefore requires the presence of an operator.

The operator has the direct responsibility for compliance with all safety standards not only where he is concerned but also for any persons who may be exposed to machine risks.

Do not obstruct any ventilation openings. Refer to "Installation" section before using the unit.

**Connection:**

This unit must be connected to a properly grounded electrical outlet.

---

**Maintenance:**

- Maintenance must be carried out by qualified personnel.
  - Warning! Disconnect the machine cable from the power supply before performing any maintenance on the unit.
  - Never use solvents or other aggressive cleaning products.
  - Clean the surfaces of the unit with a dry cloth.
- 

**Regulatory information:**

Device in compliance with European directives



EAC (Eurasian Economic Community) mark of conformity

---

**Disposal:**

This material is subject to separate waste collection. It must not be disposed of with household waste. Dispose at appropriate facility.

## 2. PRODUCT IDENTIFICATION

A label is located on the back of the machine bearing the “CE” conformity mark:

- Name and address of manufacturer
- Date of manufacturing
- Model
- Type of product
- Operating voltage

## 3. PRODUCT SPECIFICATIONS

	<b>Inductor® ALFe™ 3.5</b>
Rated power	3.5 Kw
Rated voltage	240 V/P1
Mains voltage frequency	50 Hz – 60 Hz
Current Intensity	I max 16Amp
Heater frequency	15 KHz – 30 KHz
Insulation class	IP 21
Coolant tank capacity	0.5 gal
Mains cable length	8 ft
Inductor cable length	10 ft

## 4. PRODUCT WEIGHT AND DIMENSIONS

	<b>Inductor® ALFe™ 3.5</b>
Weight (lb)	33
Dimensions (in)	19 x 13 x 16 h

## 5. UNIT DESCRIPTION (Fig 1, 2, 3, 4 )

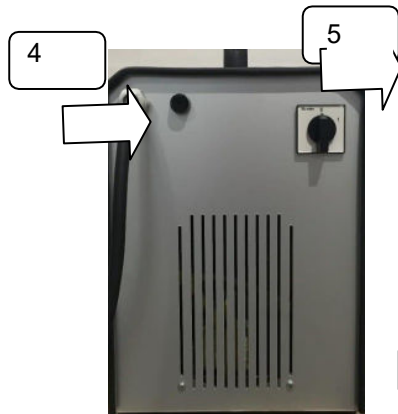


Figure 1

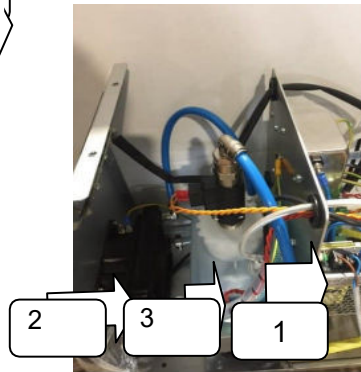


Figure 2

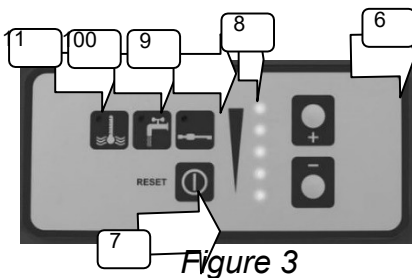


Figure 3

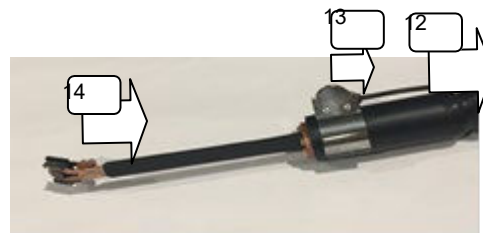


Figure 4

**Figure 1, 2, 3, 4**

1	Pump
2	Radiator
3	Antifreeze fluid tank
4	Main switch
5	Fuse holder
6	Power level adjustment buttons
7	Reset button
8	Power level signal LED
9	Handpiece error signal
10	Pump error signal
11	Antifreeze fluid temperature signal
12	Inductor
13	Heating start button
14	Flow concentrator



## 6. INSTRUCTIONS FOR USE

- I. Turn the main switch (4) to ON position. The machine checks the system and prepares to work, then wait a few seconds.
- II. Use the buttons (6) to select the desired power level. These levels are shown by the power level indicators (8, see *Figure 3*).
- III. Place the flow concentrator on the part to be heated (*Figure 5*) and press the heating start button (13, *Figure 4*):



*Figure 5*

**NOTE:** If the machine is used for long periods of time, it is advisable to leave it switched on for a few minutes before switching it off, so that the liquid in the tank can cool down more quickly.



The machine has been designed to minimize the risks due to electromagnetic fields. Additional risks exist and it is recommended to keep a minimum safety distance of 12 in between the inductor and the operator's head or bust.

## 7. ALARM LIGHTS

- LED 9 indicates a malfunction of the inductor.
- LED 10 indicates a malfunction of the hydraulic circuit
- LED 11 indicates that the antifreeze liquid has reached the temperature threshold.

## **8. APPLICATION OF THE WARRANTY**

### **8.1. Return of products to Induction Innovations, Inc.**

If the reseller declares the malfunctioning of a product, they are required to submit the following information to Induction Innovations, Inc.:

- product serial number
- a description of the problem with the product
- photo of encountered defects, if possible

The reseller can send defective products to Induction Innovations, Inc., however they shall bear all shipment costs.

Products shall be repaired and resent with a customer's successive order. In case of request for sending in advance of order shipment, transport costs shall be borne by the customer.

If products are in warranty, spare parts and repair costs shall be borne by Induction Innovations, Inc.. If products are not in warranty, Induction Innovations, Inc. shall issue a repair quote which the customer then accepts or refuses.

The warranty does not apply in the case of products resent without being appropriately packaged and thus at risk of damage during shipment. Please take care as shippers tend to not handle packages with care.

### **8.2. Recommendations regarding product transport**

The company Induction Innovations, Inc. only accepts paid shipments.

The reseller is exclusively liable for damage caused to a product due to inadequate packaging, even if the package is accepted by our warehouse. Since it is not possible to open each package upon arrival, Induction Innovations, Inc. shall accept goods with reservation from shipper if there is visible damage to packaging material.

### **8.3. Recommendations for packaging and transport**

If possible, organize goods on pallets. This is considered the best solution to avoid damage to products during shipment.

If required, that goods are packaged in cardboard using bubble wrap so that packaging absorbs shock that may occur during shipment.

Place packaged product in very thick cardboard and ensure that all sides are wrapped in bubble wrap or other material that can ensure protection of products as much as possible during shipment.

## 8.4. Warranty duration and limits

A product remains in warranty for one year from date of purchase. In any case, the warranty period shall not exceed two years from product manufacture date, unless the end customer submits proof of purchase date.

The warranty does not apply to the following cases:

- an external cause (mechanical shock, lightening, sudden changes in voltage)
- damage incurred during transport or storing
- a product installed in a manner that does not comply with manufacturer specifications
- a product containing too much dust in inner parts
- a product exposed to rain or humidity
- a product which has been modified by the client
- deteriorations caused by ill use of equipment
- use of unsuitable accessories or consumables
- natural wear of different parts of equipment
- freezing caused by insufficient or unsuitable use of the coolant

The guarantee does not apply to normal wear of accessories or consumables (ferrite).

If the equipment is modified or repaired by unauthorized personnel, the warranty shall be void.

**CAUTION: The inductor (Fig. 4) must not be bent or altered in shape in any way. If the inductor is modified, the warranty will be automatically voided.**

## 9. REPLACING THE INDUCTOR



Inductor replacement should be performed only by authorized personnel and only after cutting off power to the machine.



Wear protective gloves during maintenance and/or repairs.

Electrically isolate the machine by disconnecting it from the main power supply.

When replacing the inductor, verify that there are no significant liquid leaks from the manipulator. If there are any significant leaks, top off liquid in the corresponding tank.

**Tightening should not exceed 5Nm when fastening the inductor. Tighten using a suitable torque wrench.**

## 10. MAINTENANCE

### 10.1. General recommendations

- Machine maintenance must be carried out by qualified, authorized personnel who are aware of its operating procedures.
- Never perform any cleaning, lubrication or maintenance with the machine running.
- Before any maintenance work, set the main switch to "0" to cut off power, unplug it from the mains to prevent electrical shock or other hazards resulting from mishandling.
- Never wear rings, watches, jewelry, loose or dangling clothing such as ties, torn garments, scarves, unbuttoned jackets or jackets that zip open that can get tangled during work.
- It is instead advisable to use suitable clothes for accident prevention, for example: non-slip shoes, anti-noise headphones, goggles, appropriate gloves, etc.
- Never use gasoline or flammable solvents to clean the machine. Use water and, if necessary, commercial non-toxic solvents.
- After operations have been completed, always refit any protections that were removed before re-starting the machine.

### 10.2. Preventive maintenance

Meticulous inspections carried out regularly are necessary in order to detect and eliminate faults quickly before they can cause any major damage.



Any time you need to use the Inductor® ALFe™ 3.5, first check the efficiency of safety devices, the conditions of connections and if there are any anomalies by performing some no-load tests and non-ferrous scrap material. Check daily for wear and legibility of warning signs.

### 10.3. Routine maintenance

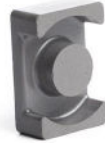
Machine operating safety can only be guaranteed if repairs are performed using only original or however approved replacement parts and if maintenance instructions are followed correctly.

At the end of each use, with the machine disconnected from the electrical main power supply, proceed with a general cleaning of the machine, quickly removing dust or dirt deposits in general as this could reduce ventilation and alter machine function and durability.

Before each use, verify the functionality of control devices, safety devices and the conditions of electrical connecting cables.

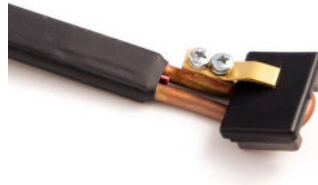
### 10.3.1. Replacing the flow concentrator

In the event of flow concentrator (ferrite, *Figure 6*) wear



*Figure 6*

Remove the screws fastening the brass tab, extract the flow concentrator, carefully clean the copper part and replace the worn concentrator with a new one fastening it with the appropriate tab and the respective screws (*Figure 7*).



*Figure 7*



Periodically carry out visual checks on the inductor verifying the absence of liquid leaks and any dust accumulations or residue on the ventilation inlets.

## 10.4. Special maintenance

### 10.4.1. Replacing the antifreeze fluid



After a working period of about 1 year, it is advisable to replace the antifreeze fluid both to increase the service life of the machine components and for a working cycle that is efficient in terms of time.

Proceed as follows to replace the antifreeze fluid:

Remove the front panel of the machine to access the fluid tank, remove the closing cap of the fluid tank (together with the meshed rubber hose), place it inside an empty container (same capacity as the machine tank), start the machine, wait for the machine to be emptied and turn off the machine. Add the antifreeze fluid, diluting it in the correct percentage (according to your temperature requirements) with water.

Close the tank with the cap, start the machine and wait a few seconds for the circuit supplying the inductor to charge. It is evident that the tank level has decreased, so add more water to the specified level.

**NB:** Contact the manufacturer or an authorized dealer whenever there are any breakages requiring the removal of machine.

## Inductor® ALFe™ 3.5 attachments



1. Glass Blaster



2. Fast-off



3. Pneumatic pedal switch with air hose



**Built For**

---

Induction Innovations, Inc.

---

1175 Jansen Farm Ct

---

Elgin, IL 60123

**By**

---

ALBATROS TRADE s.r.l.

---

Via Aurelia, 65

---

54033 CARRARA (MS)

ITALY