

# STEP-BY-STEP GUIDE TO CHANGING THE GLYCOL MIXTURE ON THE ALFe<sup>®</sup> 3.5

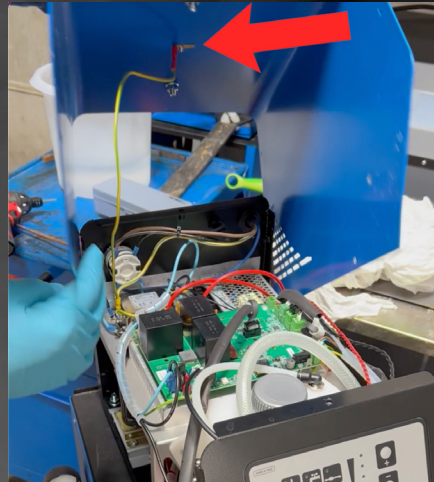


INDUCTION  
INNOVATIONS



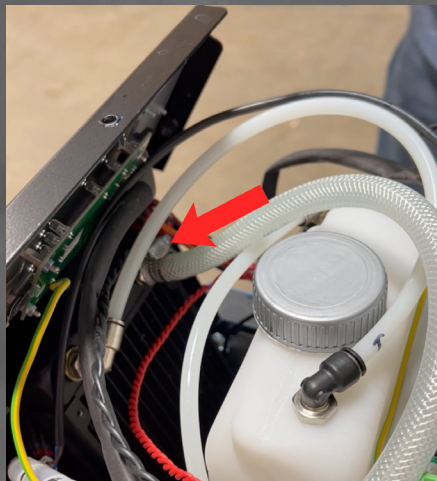
## STEP ONE

Unplug the unit and remove the 14 screws from the blue housing.



## STEP TWO

Take the housing off and disconnect the ground wire attached to the housing.



## STEP THREE

We will be removing the braided hose from the radiator, so you need to loosen up the C clamp (but keep it on the hose so you don't lose it)



## STEP FOUR

Put rags down to cover the boards inside the unit in case of any spills (do this before removing the hose) and slowly pull the hose off. You may need pliers to get the hose disconnected.



## STEP FIVE

Put the free end of the hose into your discard bucket and then remove your rags. Make sure there's no water leakage.



## STEP SIX

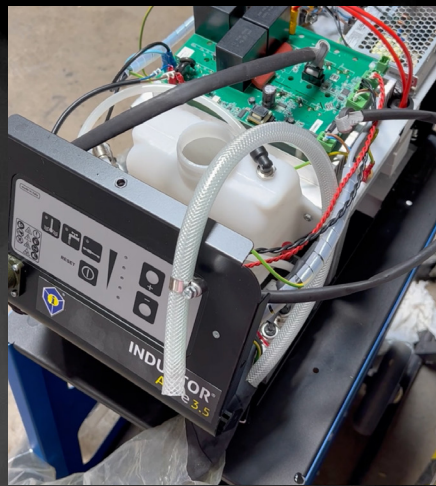
Plug the unit back in (you'll use the pump to get the glycol out) and turn it on.





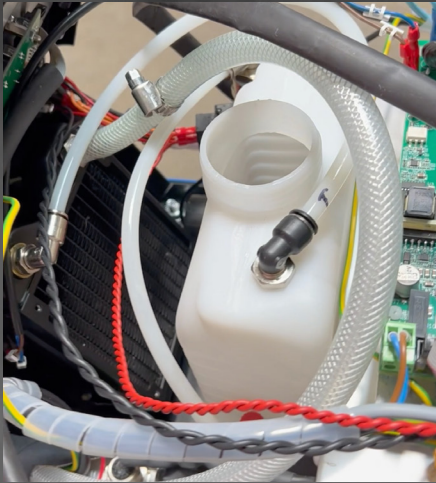
### STEP SEVEN

When the unit is on, the pump will start flowing and the mixture will drain into your bucket. You can remove the cap while it's emptying.



### STEP EIGHT

When the pump is empty, you will hear a beep. Turn off the unit and disconnect the power. We're ready to refill!



### STEP NINE

Reconnect the hose with the c clamp back onto the unit. Check for leakage again.



### STEP TEN

Now, test your glycol mixture with a refractometer to confirm it's at the level you want it. For us, we wanted it at zero degrees 38%. But yours might be different depending on temperature.



### STEP ELEVEN

Place a funnel into the tank and pour your mixture in (fill all the way up).



### STEP TWELVE

Take off the funnel and plug the unit back in. Turn the unit on and you should start seeing the fluid circulating through the braided hose. (This is a good time to check for leaks again. Make sure there is no beeping).



### STEP THIRTEEN

If everything is good to go, disconnect the unit from power and reverse the procedure. Put the cap back on & plug the ground wire back into the housing. Put the housing back on and secure it with those 14 screws.



## Questions? Contact Us!

Call:  
877.688.9633

Email:  
General: [info@theinductor.com](mailto:info@theinductor.com)  
Repairs: [repairs@theinductor.com](mailto:repairs@theinductor.com)

Hours of Operation:  
8AM-5PM CST Monday-Friday

Follow Us:

